



UNIVERSITAS
INDONESIA

Veritas, Probitas, Justitia



This certificate is awarded to

Università Degli Studi Di Modena E Reggio Emilia

as The 436th World's Most Sustainable University
Jakarta, 19 Desember 2018



Prof. Dr. Ir. Muhammad Anis, M.Met
Rector Universitas Indonesia



Prof. Riri Fitri Sari, M.M., M.Sc
Chairperson of UI GreenMetric



UNIVERSITAS
INDONESIA

Veritas, Probitas, Iustitia



Fact File 2018

Università Degli Studi Di
Modena E Reggio Emilia

ITALY

Via Università 4, 41121 Modena

UNIVERSITY PROFILE

Name : Università Degli Studi Di Modena E Reggio Emilia

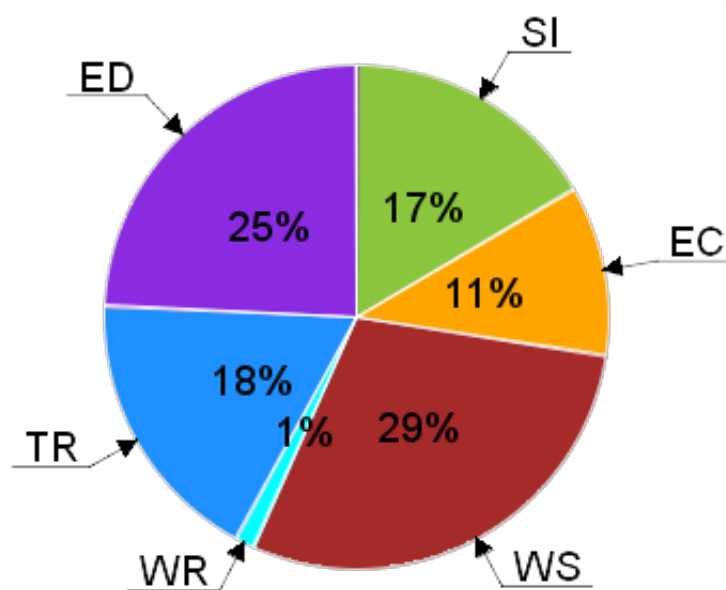
Established : 1970

Country : Italy



VERIFIED DATA

Category	Point	Maximum Point	Percentage
Setting and Infrastructure (SI)	725	1500	48.33 %
Energy and Climate Change (EC)	475	2100	22.62 %
Waste (WS)	1,275	1800	70.83 %
Water (WR)	50	1000	5.00 %
Transportation (TR)	775	1800	43.06 %
Education (ED)	1,075	1800	59.72 %
Total Score	4,375	10000	43.75 %



Result Summary

World Ranking
436

SI Ranking
448

EC Ranking
662

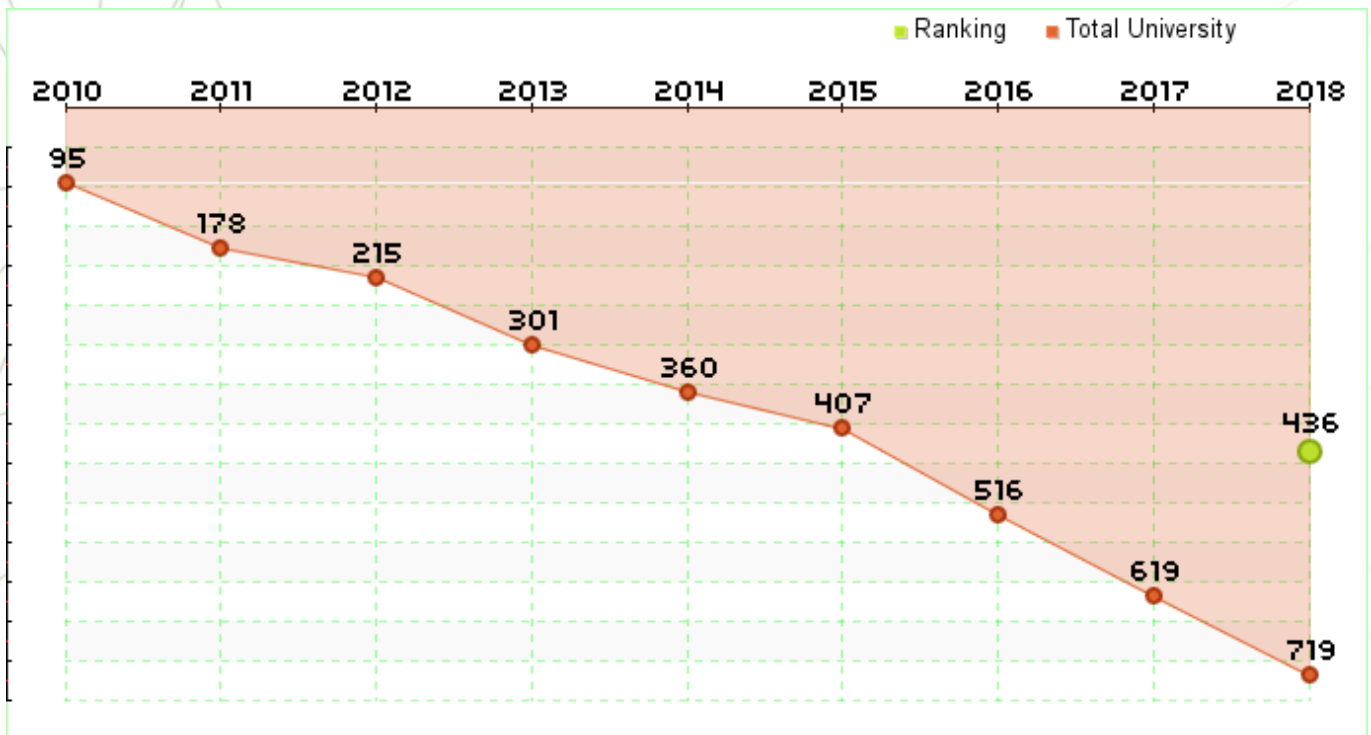
WS Ranking
155

WR Ranking
672

TR Ranking
411

ED Ranking
251

World Rankings History



Ranking in Italy

Country Ranking
23

SI Ranking
17

EC Ranking
25

WS Ranking
15

WR Ranking
22

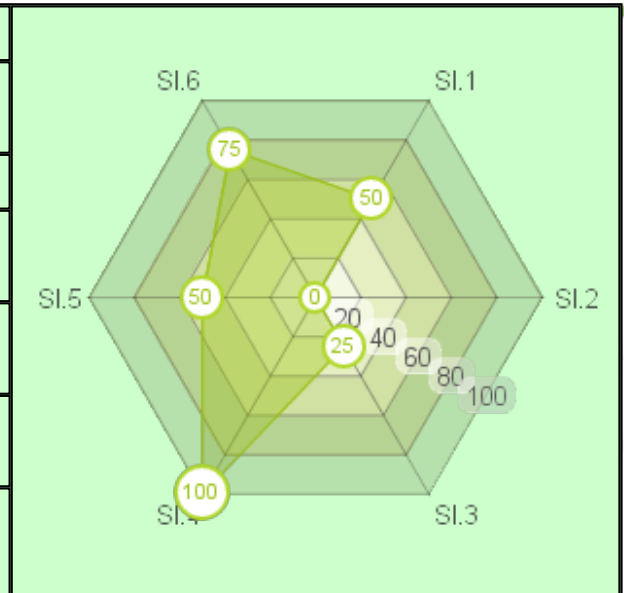
TR Ranking
19

ED Ranking
14

Result Detail

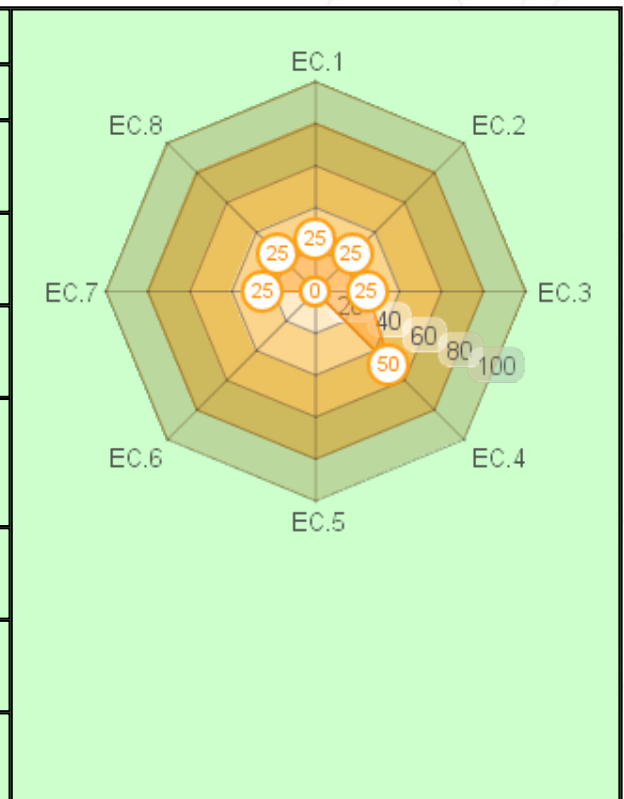
Setting and Infrastructure

Indicator		Score
SI.1	The ratio of open space area towards total area	150
SI.2	Area on campus covered in forest	0
SI.3	Area on campus covered in planted vegetation	75
SI.4	Area on campus for water absorbance	200
SI.5	The ratio of open space area divided campus population	150
SI.6	University budget for sustainability effort	150



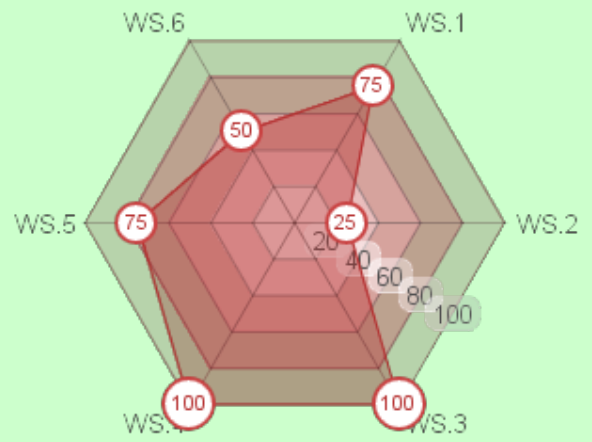
Energy and Climate Change

Indicator		Score
EC.1	Energy efficient appliances usage	50
EC.2	Smart building program implementation	75
EC.3	Number of renewable energy source in campus	75
EC.4	The total electricity usage divided by total campus population	150
EC.5	The ratio of renewable energy production towards total energy usage per year	0
EC.6	Element of green building implementation	0
EC.7	Greenhouse gas emission reduction program	50
EC.8	The ratio of total carbon footprint divided campus population	75



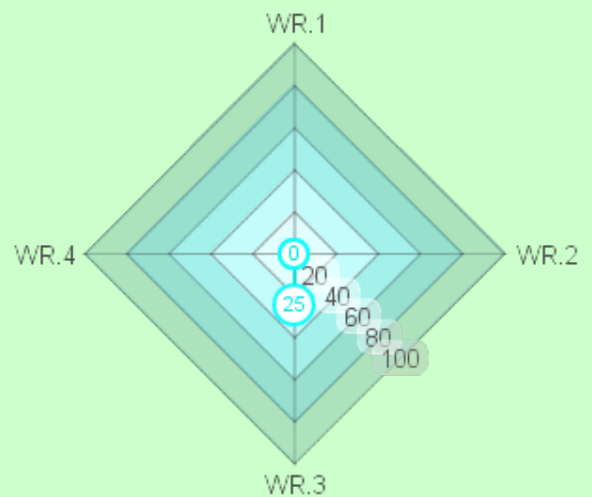
Waste

Indicator		Score
WS.1	Recycling program for university waste	225
WS.2	Program to reduce the use of paper and plastic in campus	75
WS.3	Organic waste treatment	300
WS.4	Inorganic waste treatment	300
WS.5	Toxic waste treatment	225
WS.6	Sewerage disposal	150



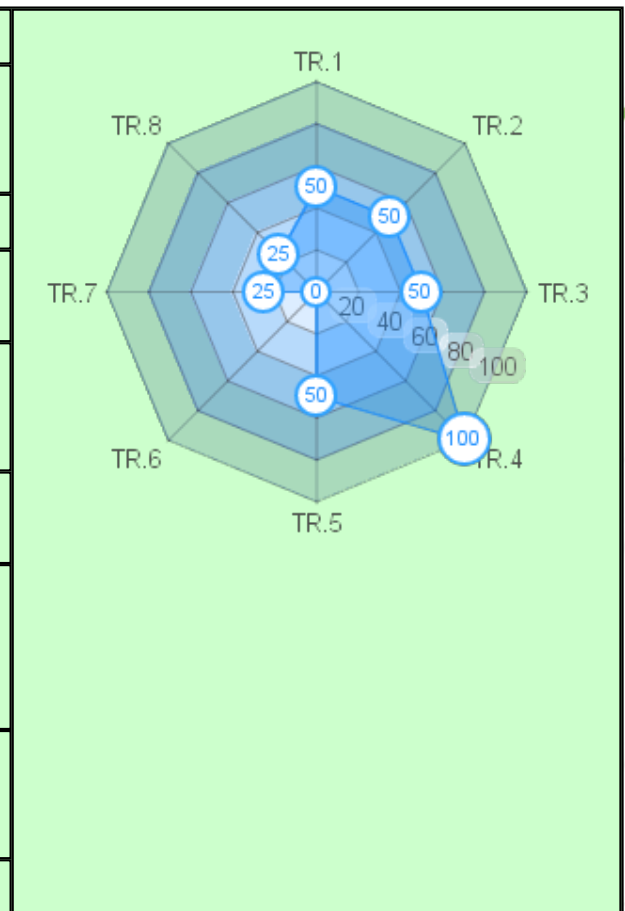
Water

Indicator		Score
WR.1	Water conservation program	0
WR.2	Water recycling program	0
WR.3	The use of water efficient appliances	50
WR.4	Piped water consumed	0



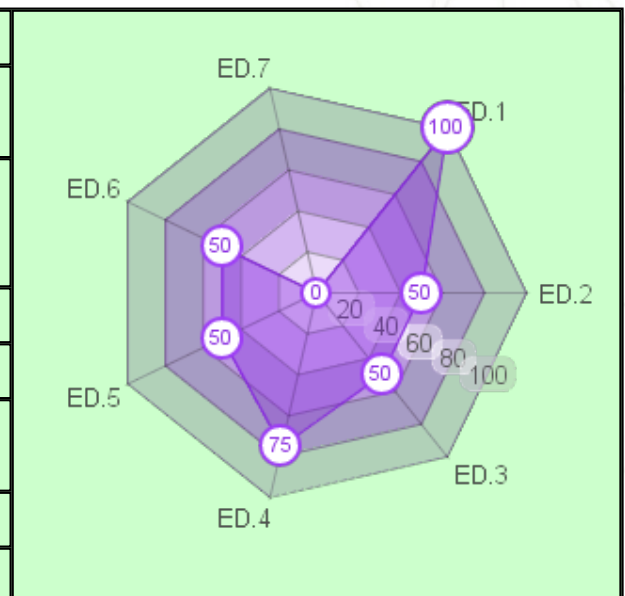
Transportation

Indicator		Score
TR.1	The ratio of total vehicles (cars and motorcycles) divided by total campus population	100
TR.2	Shuttle services	150
TR.3	Zero Emission Vehicles (ZEV) policy on campus	100
TR.4	The ratio of Zero Emission Vehicles (ZEV) divided by total campus population	200
TR.5	Ratio of parking area to total campus area	100
TR.6	Transportation program designed to limit or decrease the parking area on campus for the last 3 years	0
TR.7	Number of transportation initiatives to decrease private vehicles on campus	50
TR.8	Pedestrian policy on campus	75



Education

Indicator		Score
ED.1	The ratio of sustainability courses towards total courses/modules	300
ED.2	The ratio of sustainability research funding towards total research funding	150
ED.3	Sustainability publications	150
ED.4	Sustainability events	225
ED.5	Sustainability student organizations	150
ED.6	Sustainability websites	100
ED.7	Sustainability report	0



UI GreenMetric World University

Rankings

About UI GreenMetric

UI GreenMetric World University Rankings is an annual publication of university rankings by UI GreenMetric. UI GreenMetric World University Rankings is a program from University of Indonesia that rank universities by their commitment and action towards going green and environmental sustainability. UI GreenMetric World University Rankings aims to increase awareness in universities towards sustainability.

History

In 2009 University of Indonesia hosted an International Conference on World University Rankings. The conference attended by World University rankers such as Webometrics, HEEACT, and others. In 2010, Prof. Dr. Gumilar Rusliwa Somantri as Rector of University of Indonesia at that time initiated UI GreenMetric World University Rankings and appointed Prof. Riri Fitri Sari as the chairperson. Soon a team consisting of Junaidi, Budi Hartono, Allan Lauder, and Prof. Prof. Ir. Gunawan Tjahjono formulated UIGM Questionnaire and introduced UI Ranking to the world. In 2011, it added 11 new indicators in 5 categories and Education as category in 2012. By the year 2015, a massive improvement was introduced including carbon footprint and a more systematic data collection. UIGM took Policy into Action in 2016, Global Partnership for Sustainable Future in 2017 and Universities, Impacts, and Sustainable Development Goals (SDGs) in 2018 as its annual themes. To reach and coordinate more participating universities, UI GWURN was established in 2017 with a national coordinator in each country. To date, 719 universities from 81 countries participate in the rankings.

Since its establishment in 2010, it has been increasingly recognized as the first and only universities ranking on sustainability and has been used by participating universities to benchmark and do continuous improvement in the area of sustainability. As a member of IREG, more activities and collaboration among participating universities are expected to achieve our common goal: sustainable university for sustainable future.

UI GreenMetric developed its own ranking system by studying other ranking systems such as: The Times Higher Education World University Rankings (THE) sponsored by Thompson Reuters, the QS World University Rankings, the Academic Ranking of World Universities (ARWU) published by Shanghai Jiao Tong University (SJTU), and the Webometrics Ranking of World Universities (Webometrics), published by Cybermetrics Lab, CINDOC-CSIC in Spain.

UI GreenMetric Rankings TIMELINE	
2010	UI GreenMetric published for 95 Universities
2011	UI GreenMetric added 11 new indicators within 5 categories
2012	Education became one of the categories
2015	Introducing Carbon Footprint and factfile document
2016	Focusing on university action towards sustainability
2017	UIGWURN established
2018	Focusing on SDGs and enlargement of memberships

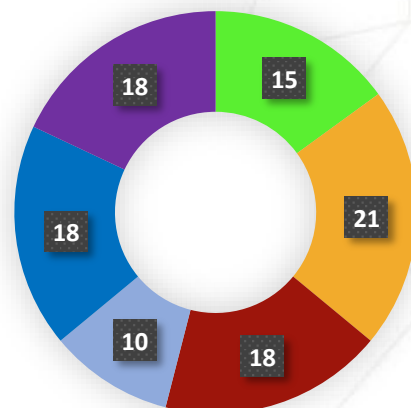
Methodology

UI GreenMetric collect data through online questionnaire. All participant answered same question for some period of time. After questionnaire close, UI GreenMetric expert member validate the answer based on evidence that participant provide.

This year's categories and weighting of points are shown as follows.

Table 1 Categories used in the ranking and their weighting

No	Category	Percentage of Total Points (%)
1	Setting and Infrastructure (SI)	15
2	Energy and Climate Change (EC)	21
3	Waste (WS)	18
4	Water (WR)	10
5	Transportation (TR)	18
6	Education (ED)	18
	TOTAL	100



The specific indicators and their points awarded are shown in Table 2. Each indicator has been uniquely identified by a category code and a number (e.g. SI 5).

Table 2 Indicators and categories

No	Categories and Indicators	Points	Weighting
1	Setting and Infrastructure (SI)		15%
SI 1	The ratio of open space area towards total area	300	
SI 2	Area on campus covered in forest	200	
SI 3	Area on campus covered in planted vegetation	300	
SI 4	Area on campus for water absorbance	200	
SI 5	The ratio of open space area divided campus population	300	
SI 6	University budget for sustainability effort	200	
	Total	1500	
	Energy and Climate Change (EC)		21%
EC 1	Energy efficient appliances usage	200	
EC 2	Smart building program implementation	300	
EC 3	Number of renewable energy source in campus	300	
EC 4	The total electricity usage divided by total campus population	300	
EC 5	The ratio of renewable energy production towards total energy usage per year	200	
EC 6	Element of green building implementation	300	
EC 7	Greenhouse gas emission reduction program	200	
EC 8	The ratio of total carbon footprint divided campus population	300	
	Total	2100	
	Waste (WS)		18%
WS 1	Recycling program for university waste	300	
WS 2	Program to reduce the use of paper and plastic in campus	300	
WS 3	Organic waste treatment	300	
WS 4	Inorganic waste treatment	300	
WS 5	Toxic waste treatment	300	
WS 6	Sewerage disposal	300	
	Total	1800	
	Water (WR)		10%
WR 1	Water conservation program	300	
WR 2	Water recycling program	300	
WR 3	The use of water efficient appliances	200	
WR 4	Piped water consumed	200	
	Total	1000	
	Transportation (TR)		18%
TR 1	The ratio of total vehicles (cars and motorcycles) divided by total campus population	200	
TR 2	Shuttle services	200	
TR 3	Zero Emission Vehicles (ZEV) policy on campus	200	
TR 4	The ratio of Zero Emission Vehicles (ZEV) divided by total campus population	200	
TR 5	Ratio of parking area to total campus area	200	
TR 6	Transportation program designed to limit or decrease the parking area on campus for the last 3 years (from 2015 to 2017)	200	
TR 7	Number of transportation initiatives to decrease private vehicles on campus	300	
TR 8	Pedestrian policy on campus	300	
	Total	1800	

6	Education (ED)		18%
ED 1	The ratio of sustainability courses towards total courses/subjects	300	
ED 2	The ratio of sustainability research funding towards total research funding	300	
ED 3	Sustainability publications	300	
ED 4	Sustainability events	300	
ED 5	Sustainability student organizations	300	
ED 6	Sustainability website	200	
ED 7	Sustainability report	100	
	Total	1800	
	TOTAL	10000	

If you have questions or suggestions about this report, please contact



Integrated Laboratory and Research Center (ILRC) Building 4th Fl.
 Universitas Indonesia
 Kampus UI Depok 16424
 Depok, Jawa Barat
 Indonesia
 Email: greenmetric@ui.ac.id